

# POST SURGICAL WOUND

**Wound after flap reconstruction  
(excision of melanoma)**

**Location: Right knee**

**Female**

**Age: 56 Years**

**Start Q.Light<sup>®</sup>: 21/06/2006**

**Full Closure: 14/08/2006**

**Total Treatment Time: 7 weeks**

**Treatment: 10 minutes daily**

# Non Healing Wound after Excision of Melanoma



Dept of Plastic & Reconstructive Surgery / UZGent



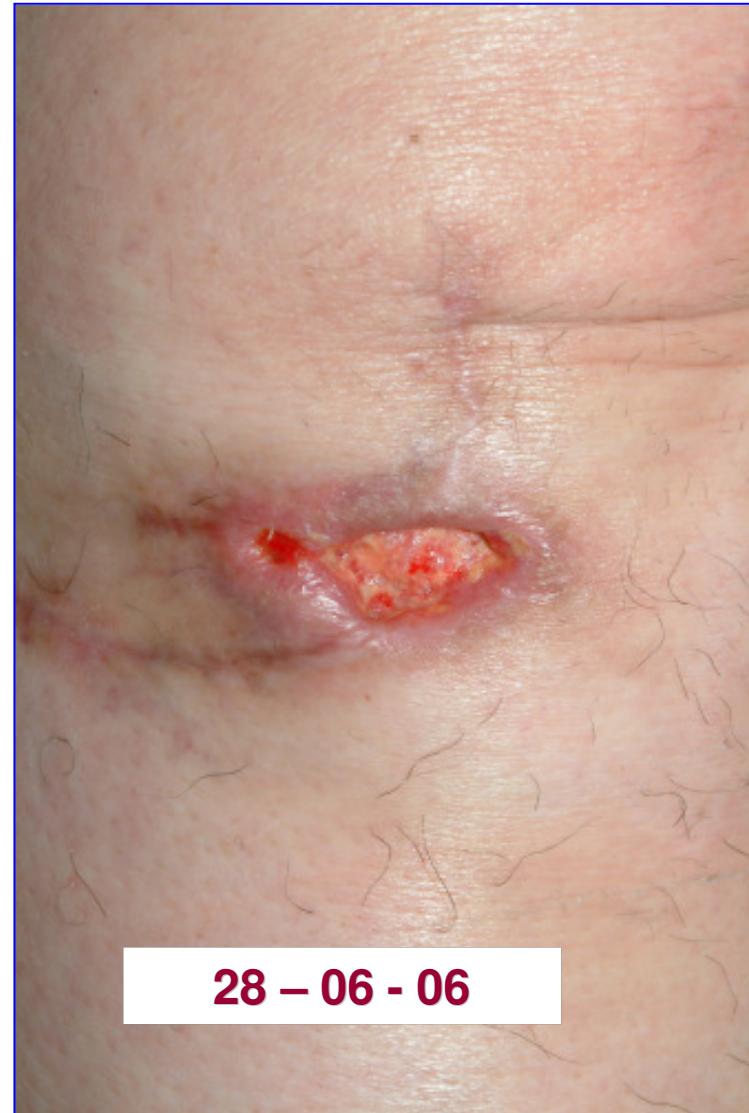
**21- 06- 06: 3 months open**



# Q.Light®



# Q.LIGHT®



# Q.LIGHT®





# Q.LIGHT®

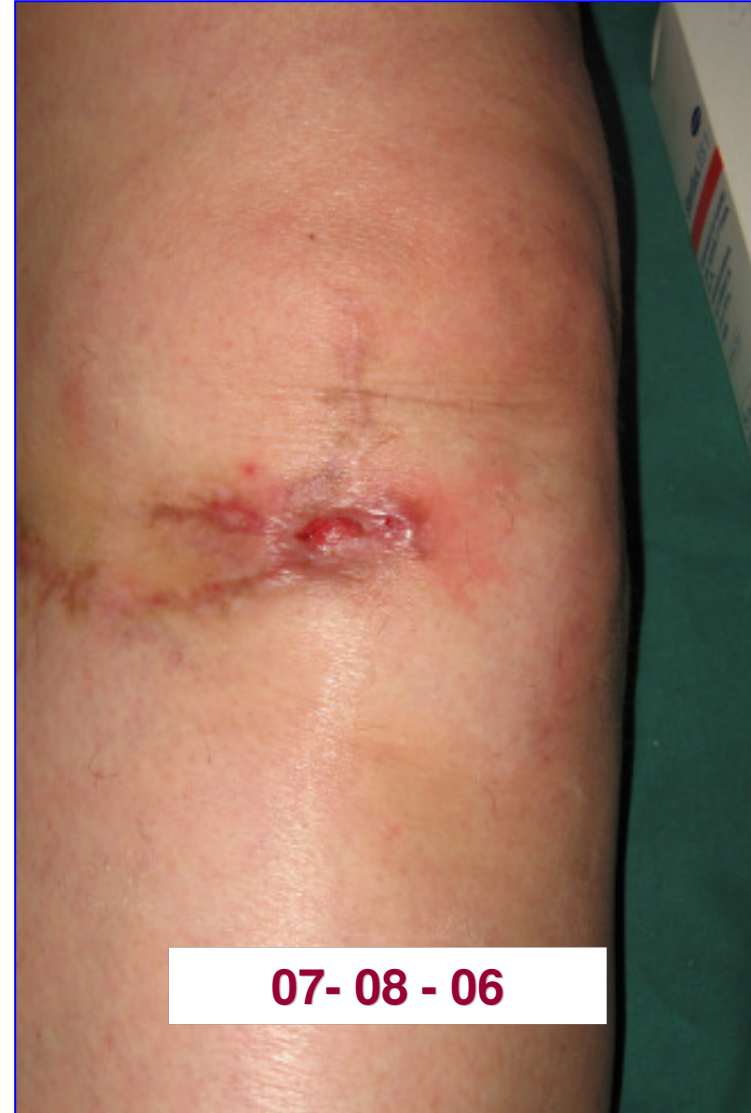


# Q.LIGHT®

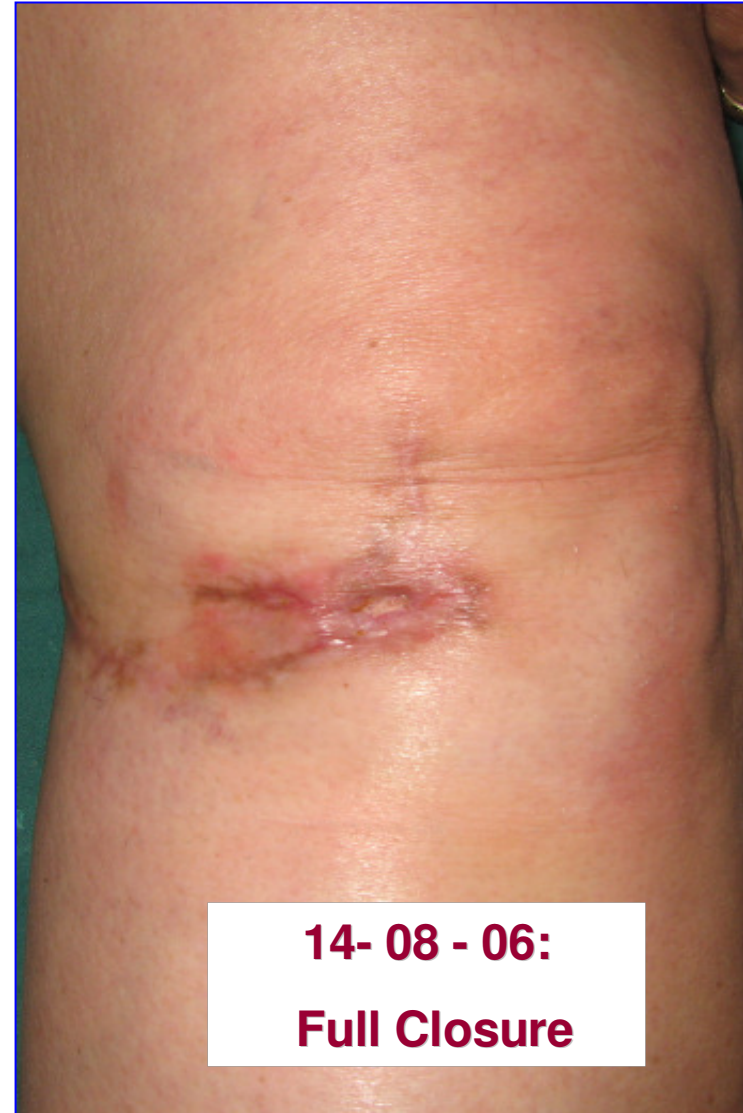




# Q.LIGHT®



# Q.LIGHT®





# Q.LIGHT®

